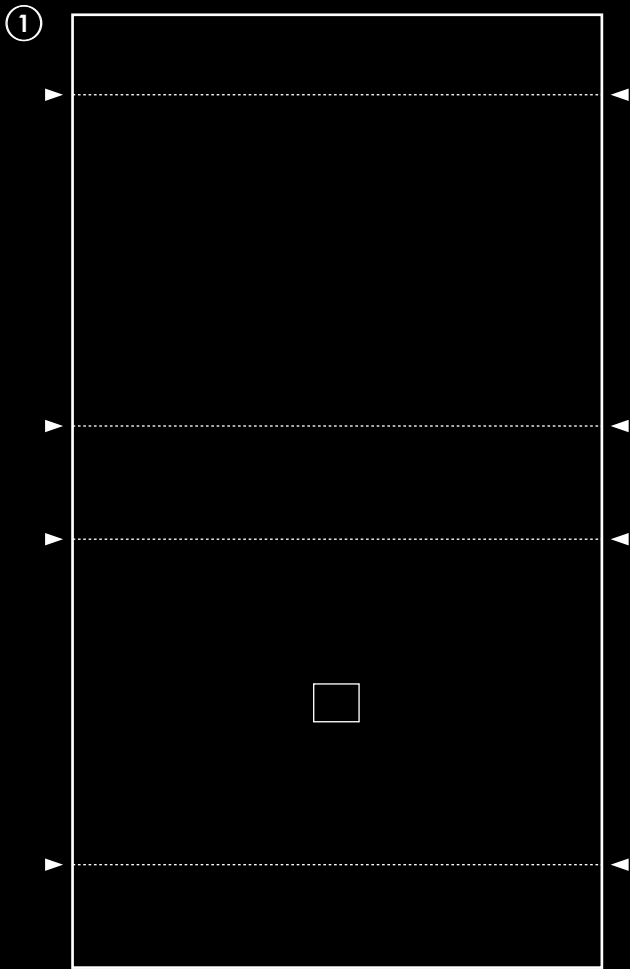
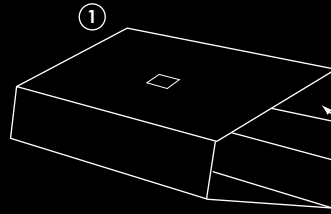


Make a pinhole from a piece of thin metal foil, for instance an aluminium food container. 1/2" x 1/2" should be a nice enough size. Make a tiny hole in the foil by pushing the tip of the tip of a sawing needle though the foil; the hole should ideally be a little less than 1/100 of an inch. Sand off any burr using very fine emery paper.

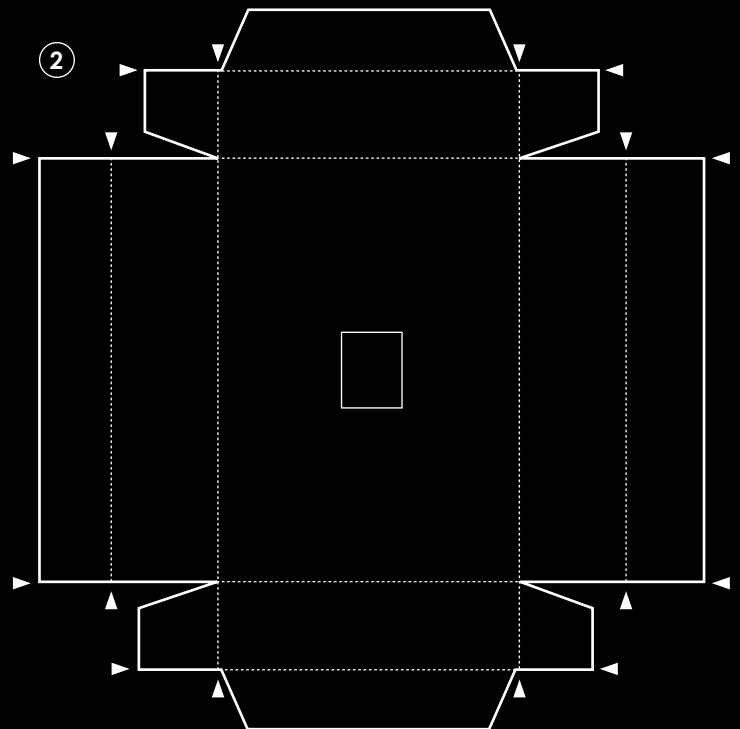
Glue this page to a sheet of black cardboard. Cut out parts 1-6. Also cut the square holes for the pinhole in parts 1 and 2 according to the layout. Mark the foldings, i.e. the dotted lines, using, for instance the back side of the blade of a knife (scalpel or sharpie knife).



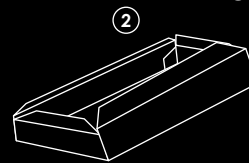
outer box



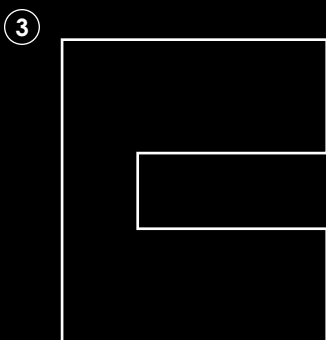
Center the pinhole in the square hole in part 1 and tape your pinhole to the inside of it, using black tape. Fold along the dotted lines and glue the longer sides together (glue goes where the arrow points).



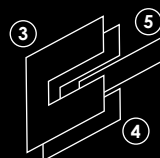
inner box



Cut the square hole in part 2 before you glue it together. This is where the pinhole piece will fit. Fold along the dotted lines. (If you need a hint, the box should be folded like a matchbox, .)

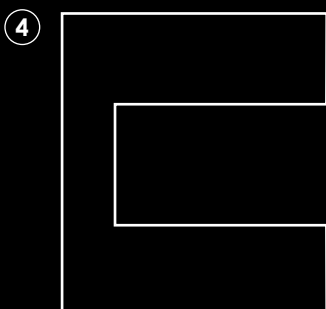


shutter

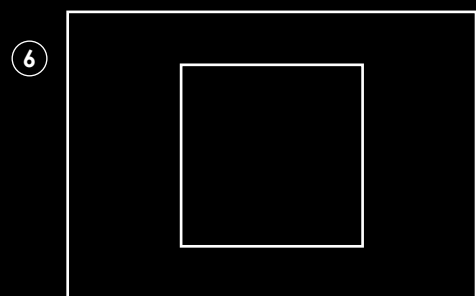


Tape or glue the shutter to the front side of the camera. Center the shutter piece in front of the pinhole. Part 5 is the shutter itself and should fit nicely into part 4.

Save this stage for last.



film mask



To be taped to the top (open side) of the inner box. (Note! This is a de luxe option.)